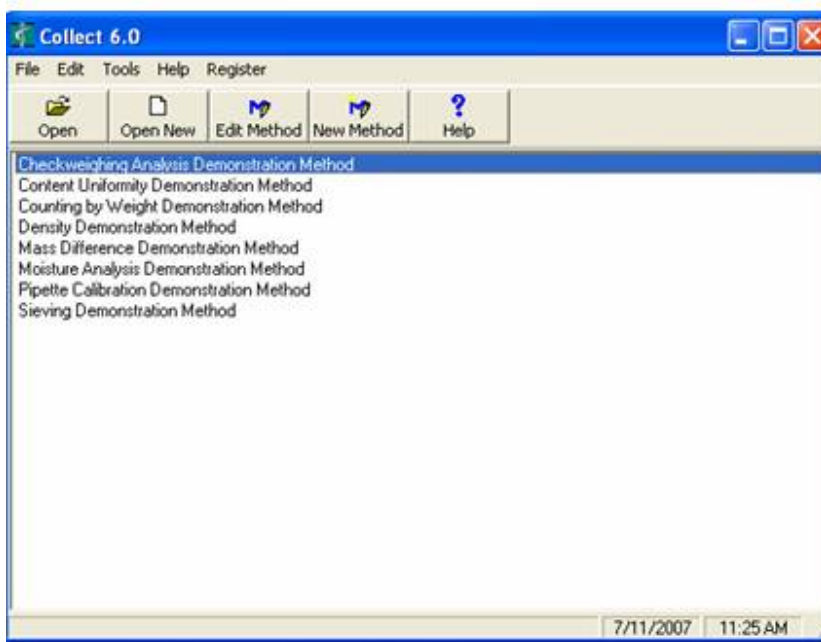




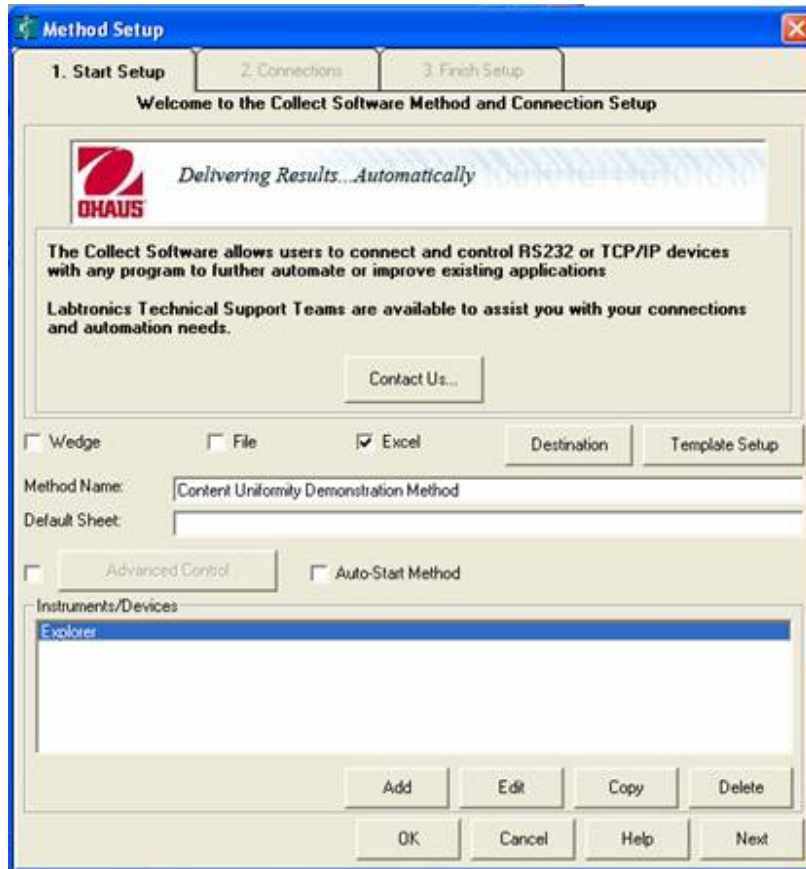
A quick guide to setting up Collect Software with your Ohaus balance.

When the software is first opened, the following window appears:

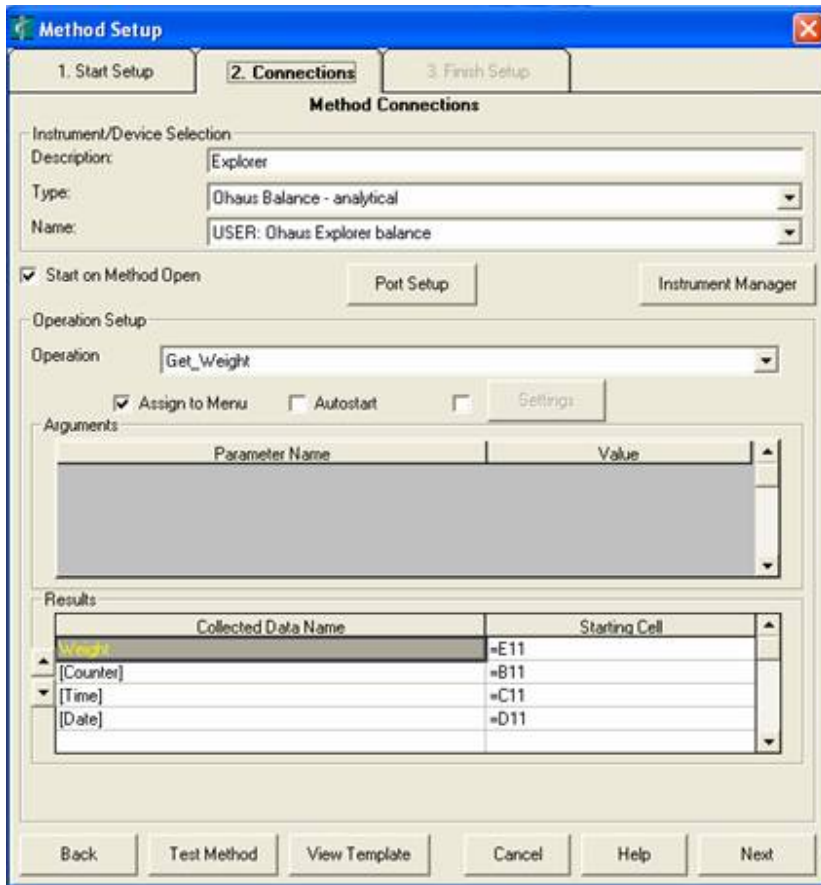


From here, 1 of the 8 pre-defined methods can be selected. Each of the methods has a balance or scale as a default. To view and/or change the balance/scale, you need to do the following:

Select the desired pre-defined method, then click the 'Edit | Method' menu option. The following window appears (as shown, a Contact US (Labtronics) button is available):

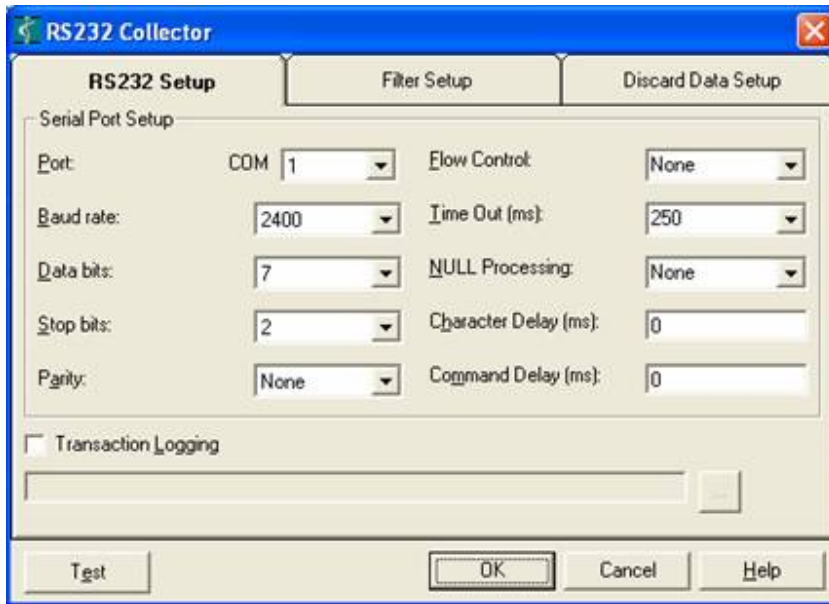


Click on the default "Instrument/Devices" name then the 'Edit' button. The following window appears:

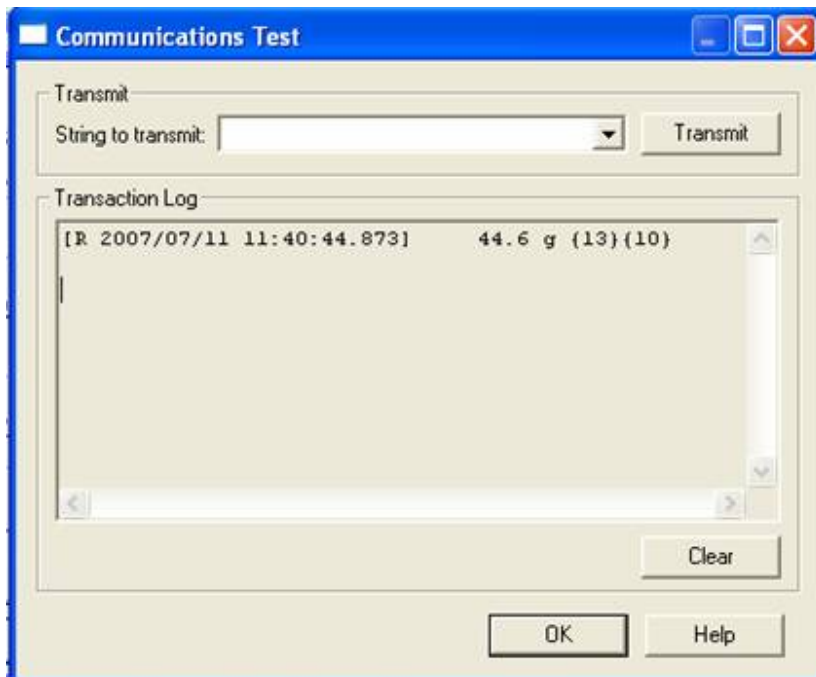


On the 'Connections' tab within Method Setup (If you have a different balance or scale you can select the "Type:" from the pull down menu and then select the model you have from the 'Name' pull-down menu)

There is also a 'Port Setup' button - click on this and then the 'RS232 Collector' 'Setup' button to change the COM Port and other RS232 settings.



In this RS232 Collector Setup window there is also a test button available to ensure communication is working. Simply press the print button on the balance or scale to test.



This is the simple overview of the setup and upon selecting OK, OK, OK, Next and Finish, they can open the viewed/modified method and begin collecting data.

NOTE:

All balances and scales must be setup to print weight information only.

Some balances like Adventurer Pro print GLP as the factory default and will cause communications problems as the software is looking for weight information only.

Collect software is fully support by Labtronics for a period of 1 year and customers are fully encouraged to contact them directly.

Labtronics can be reached at:

NORTH AMERICA
546 Governors Road, Guelph, Ontario, N1K 1E3 Canada

Hours: M-F 9 a.m. to 5 p.m. EST
Phone: (519) 767-1061
e-mail: support@labtronics.com

You can also get in touch with Labtronics by going to: <http://216.171.97.50/servicewise/clogin.dll>